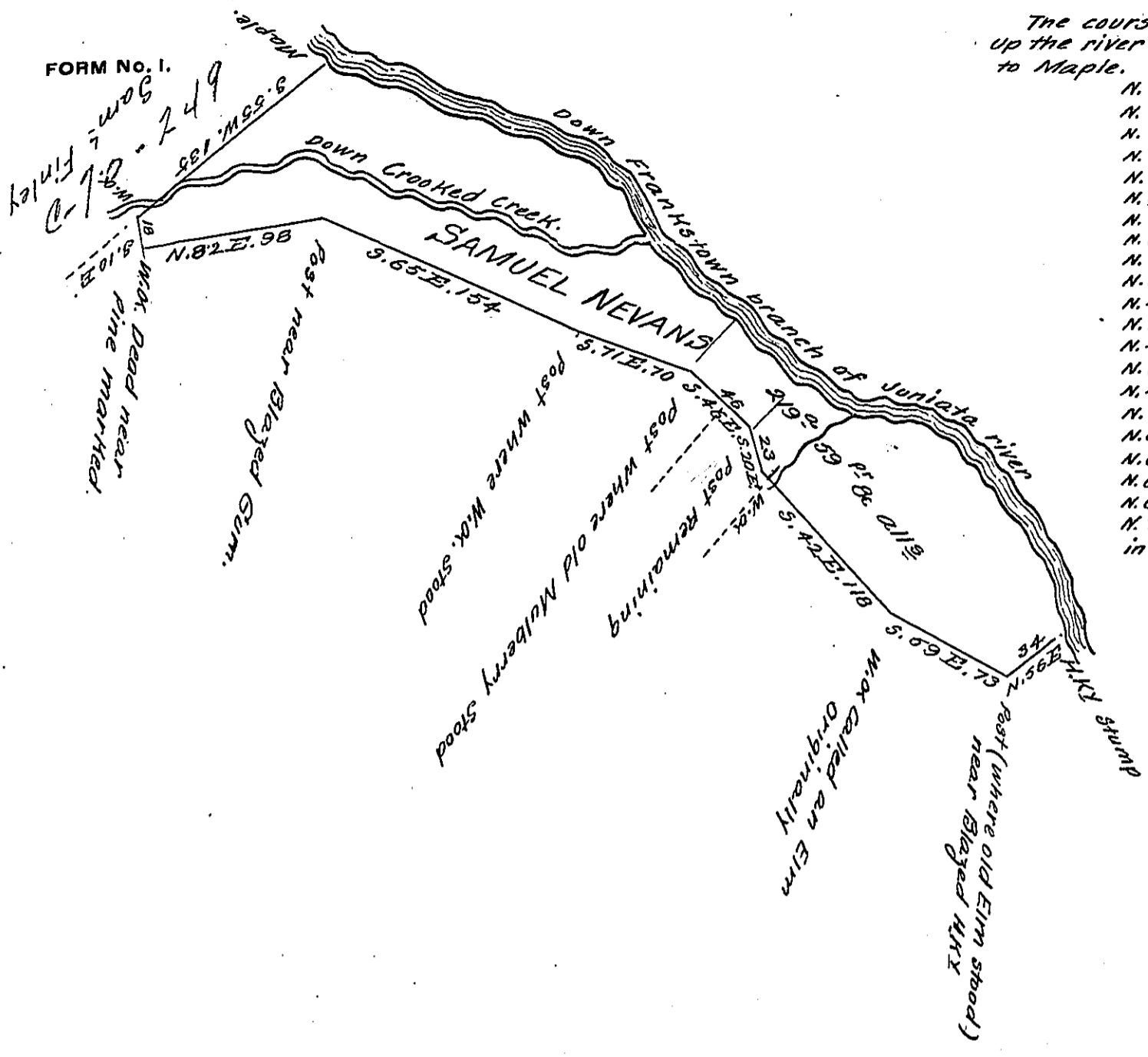


The courses & Distances up the river from HXZ 54E to Maple.

- N. 12 E. 9 perches
 - N. 18 W. 24
 - N. 29 W. 25
 - N. 35 W. 34
 - N. 38 W. 20
 - N. 52 W. 22
 - N. 70 W. 20
 - N. 88 W. 13
 - N. 73 W. 15
 - N. 59 W. 36
 - N. 45 W. 55
 - N. 52 W. 20
 - N. 41 W. 20-20
 - N. 33 W. 12
 - N. 42 W. 14
 - N. 37 W. 48
 - N. 69 W. 41
 - N. 66 W. 22
 - N. 69 W. 40
 - N. 62 W. 45 1/2
 - N. 71 W. 15 Map.
- in all 549 1/2



Situate nearly opposite the Town of Huntingdon in the Township and County of Huntingdon Containing Two hundred and Nineteen acres and fifty nine Perches & the usual allowance for Floods, Surveyed the 20th day of November 1794, in pursuance of a Warrant dated the 5th day of June 1762.

Daniel Brodhead Esquire S. & C.

Note. a survey and Return had been made on the above Warrant-67 - Richard Tea but there being some inaccuracies found in the Draft a warrant of Resurvey was directed to me in pursuance of which the Resurvey was made and all the original corners found.

John Canan D. S.

IN TESTIMONY that the above is a copy of the original remaining on file in the Department of Internal Affairs of Pennsylvania, made conformably to an Act of Assembly approved the 16th day of February, 1833, I have hereunto set my Hand and caused the Seal of said Department to be affixed at Harrisburg, this twenty-first day of May 1906.

Isaac R. Brown
Secretary of Internal Affairs.